

FEITIAN FIDO Authenticator Fingerprint Management

Overview

Currently there are 3 methods to manage FIDO authenticator: FEITIAN BioPass FIDO2 Manager, Windows settings and Chrome Browser.

FEITIAN fingerprint manager

The **BioPass FIDO2 Manager** for Windows, Mac and Linux are available on FEITIAN website: <https://www.ftsafe.com/Support/Resources>. Or you can download them from Windows store or Apple APP store.

Note: enrollment of fingerprint needs to be done via USB cable.

Enroll your first fingerprint.

1) Launch the BioPass FIDO2 Manager and plug in the FEITIAN BioPass FIDO2. Figure 2, see below, will appear.

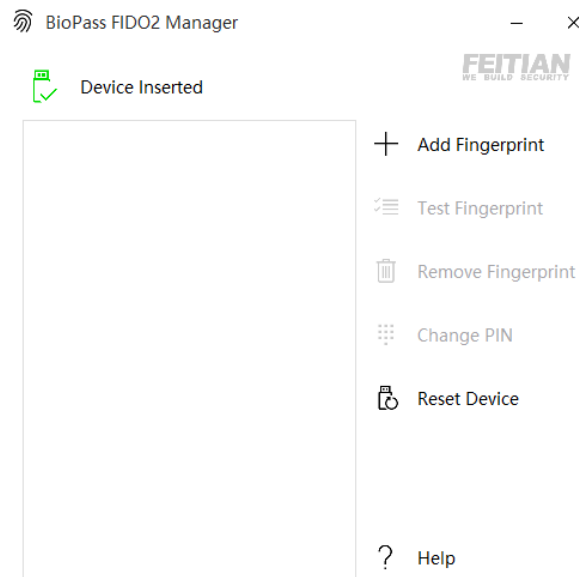


Figure 1 BioPass FIDO2 Manager

2) Click “Add Fingerprint.” You can choose using fingerprint only or set both pin and fingerprint for a verification method as shown in Figure 3. (Once you choose one option, you cannot change to the other option without resetting the device)

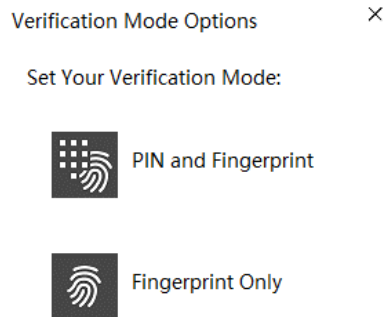


Figure 2 Verification Settings Page

3) If you choose “PIN and Fingerprint,” you will then be prompted to set a PIN. Numbers, letters and special symbols are supported.

Note: Setting up a PIN using Biopass Manager requires user to touch the sensor to prove user presence.

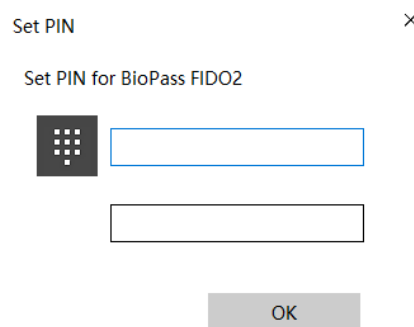


Figure 3 PIN Setup

4) Add a fingerprint by following the instructions.

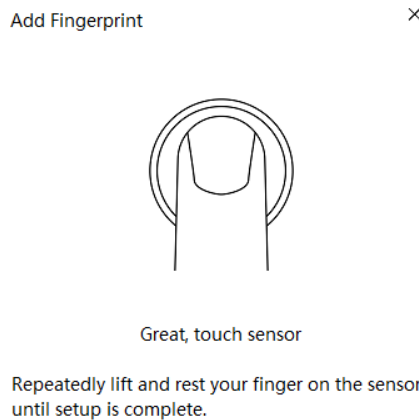


Figure 4 Fingerprint Enrollment

5) After a fingerprint has been successfully enrolled, a fingerprint will be listed in the text box.

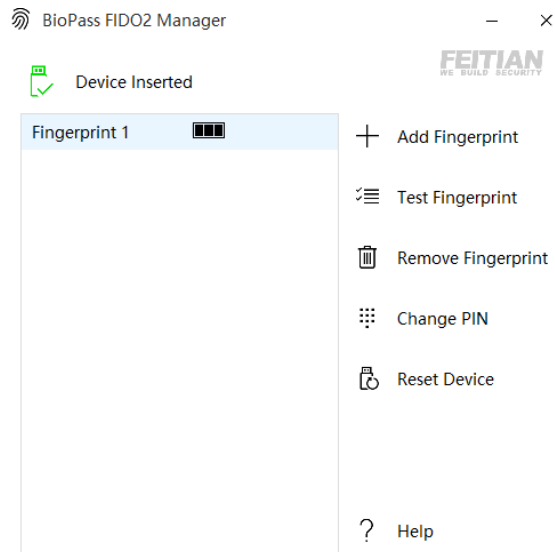


Figure 5 BioPass FIDO2 Manager with Fingerprint Enrolled

6) The BioPass FIDO2 Manager allows you to test your fingerprint, remove your fingerprint and change your pin to enjoy your secure authentication experience.

Test Fingerprint

This function is for the user to test the fingerprint verification.

Note: This testing function will trigger the **block device** procedure mentioned above.

Remove fingerprint

1) Choose the fingerprint you want to delete. ("Fingerprint 2" as shown in Figure 7)

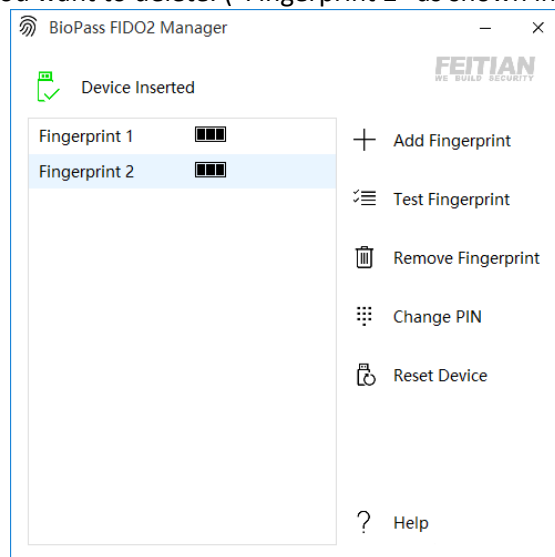


Figure 6 BioPass FIDO2 Manager with Fingerprint Enrolled

2) If a Pin has been enrolled, you will need to choose a verification option

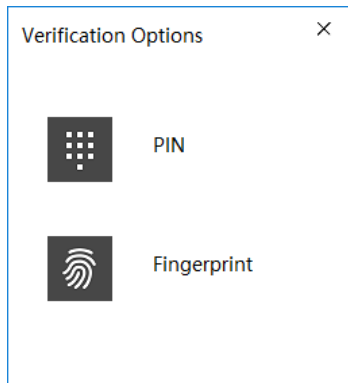


Figure 7 Verification Options

3) After verification, the fingerprint will be removed.

Change Pin

Press "Change PIN" in the BioPass FIDO2 manager to change a PIN.

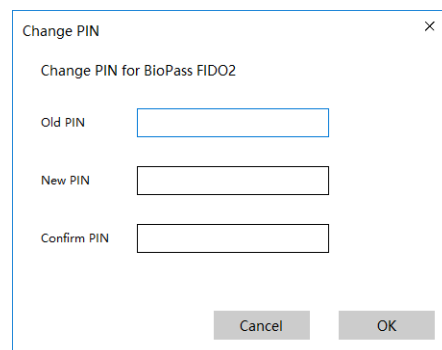


Figure 8 Change PIN

Reset Device

Note: when you reset your device, all data stored will be deleted including your credentials.

This operation need to be done within 10 seconds after the security key is powered up, and a touch is needed to prove user presence.

Windows Settings

Users can manage fingerprint, PIN or reset a security key straightly from Windows settings page if the platform is Windows 10 1903 or above via the selection of Sign-in options/Security Key tab.

- Go to Windows Settings/ Sign-in options/Security Key tab and insert your FIDO security key.

Click **Manage** button.

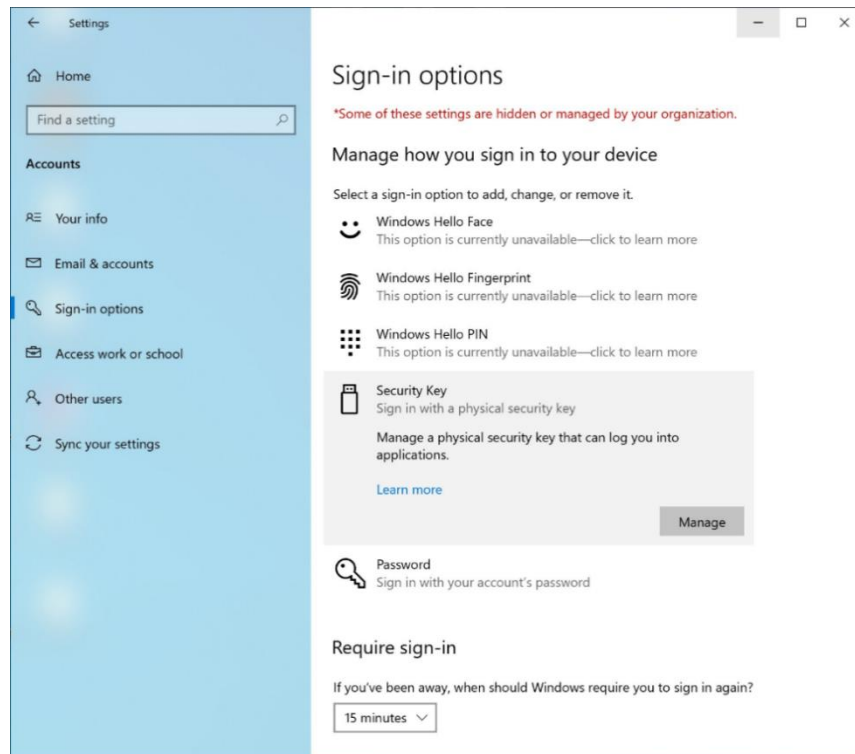


Figure 9 Windows 10 Security Key Settings Page

- Afterwards, the LED on security blinks, which requires user to touch the sensor.

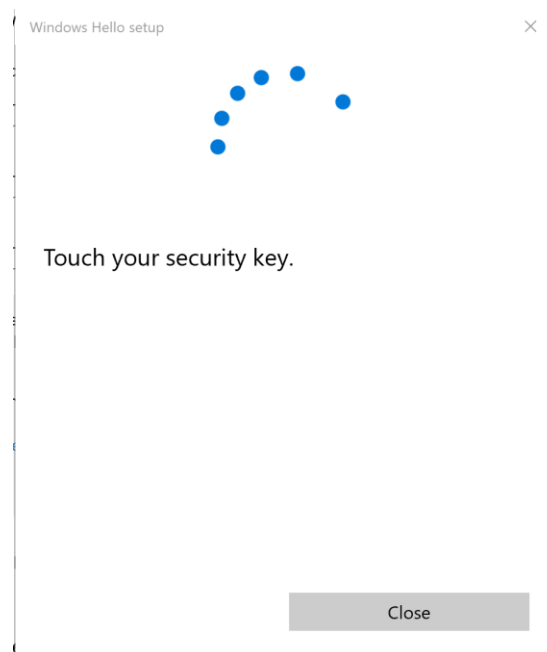


Figure 2 touch the security key

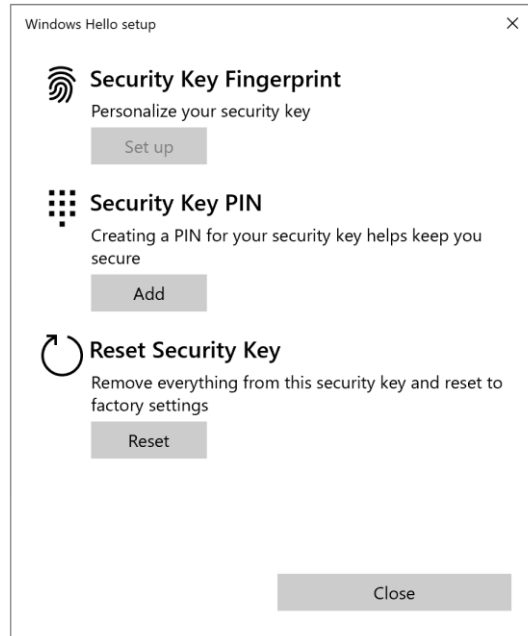


Figure 3 security key manage UI

- Before you can manage fingerprint, you need to set a PIN. You are able to change the PIN if PIN is already set.

Note: PIN length is between 4 – 63 characters.

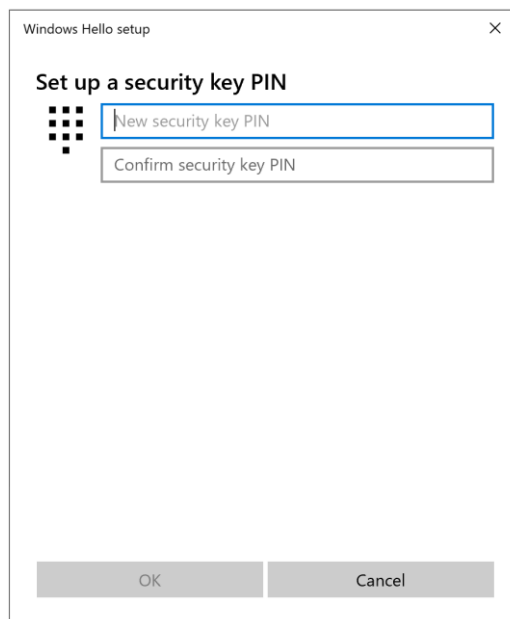


Figure 4 Add security key PIN

- Fingerprint enrollment
Click **Set up** to enroll a fingerprint, this requires user to input PIN. The enrollment process requires user to touch sensor 4 times. You are able to **remove** fingerprints if there is at least one enrolled.

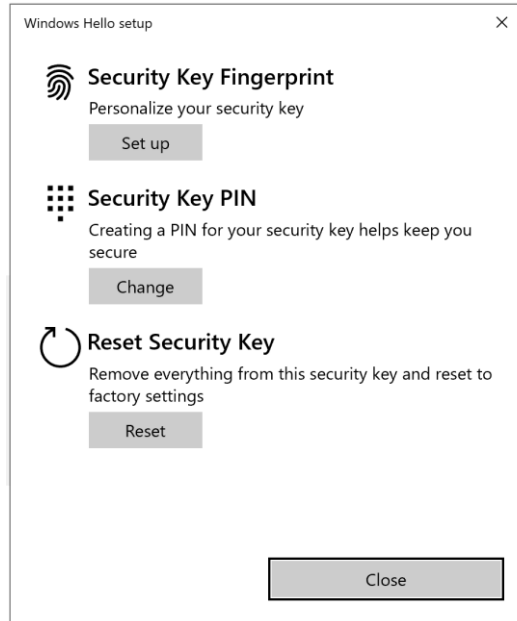


Figure 5 security key manage UI

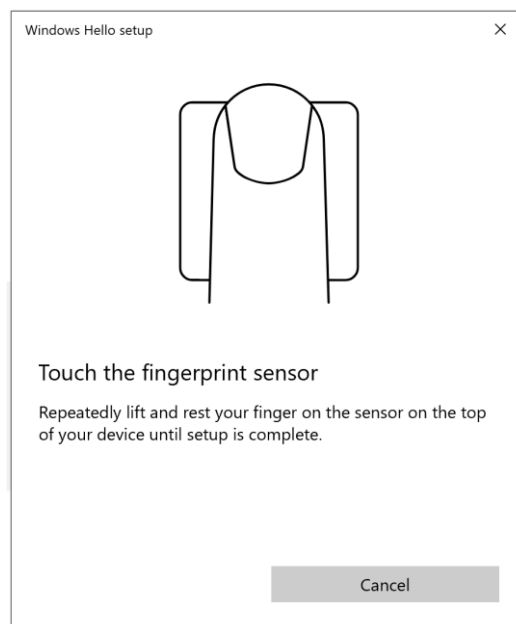


Figure 6 fingerprint enrollment

- Reset the security key.
Note: Resetting requires to be done with 10 seconds after powering up, and touch twice is needed to prove user presence.
Follow the guide windows to finish reset.

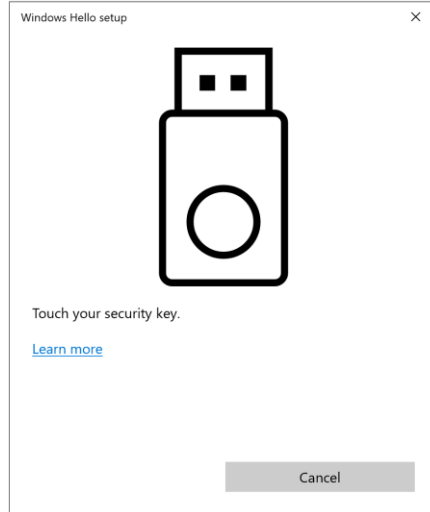
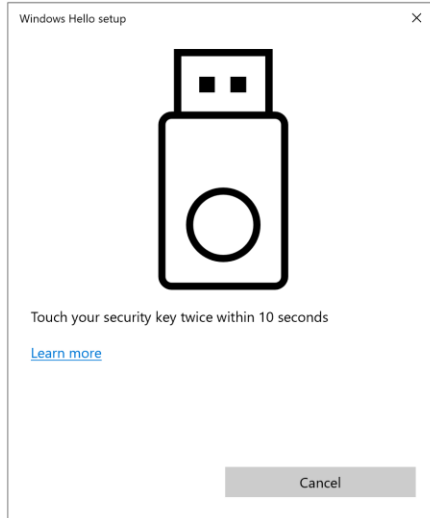
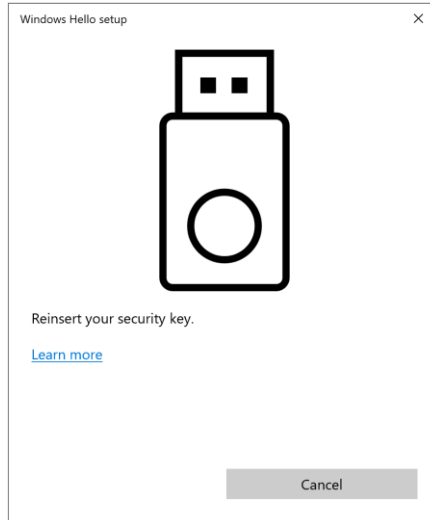


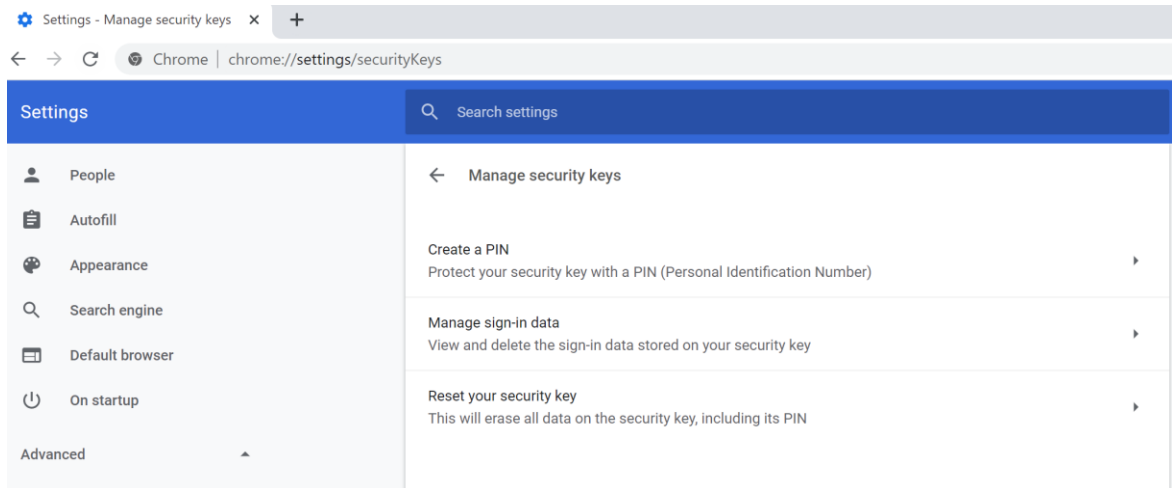
Figure 7 Reset the security key

Chrome Browser

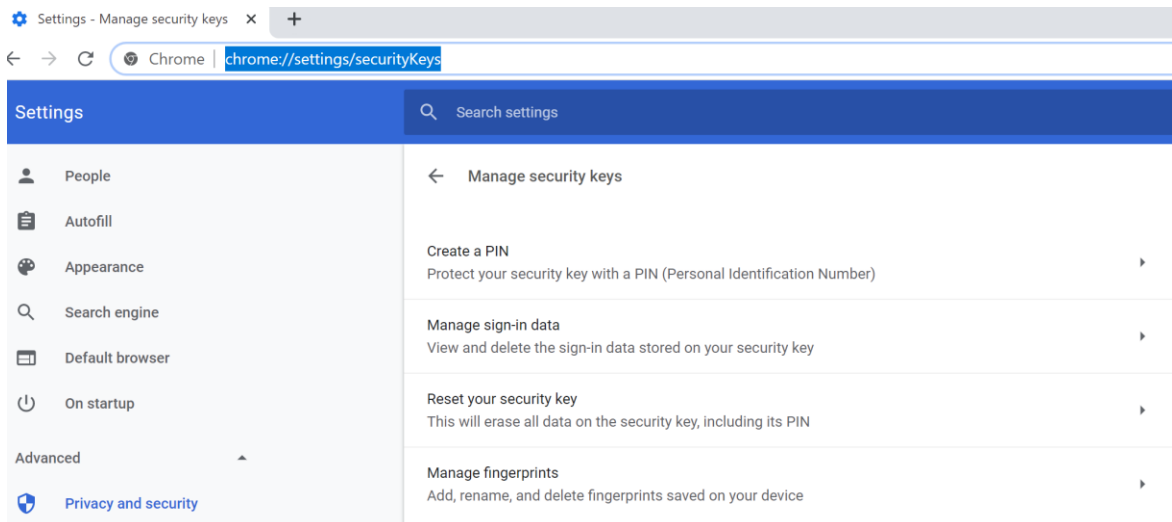
Chrome Version 79 or above on Windows, Mac or Linux are able to manage FIDO security key. This chapter use Windows as an example.

Note: if you are using Chrome on Windows 1003, you need override this by running Chrome as Administrator with the command line flag `--disable-features=WebAuthenticationUseNativeWinApi`.

- Go to chrome/settings/on startup/advanced/Manage security keys, or directly visit the link: <chrome://settings/securityKeys>



- Then you are able to manage PIN, sign-in data(Resident credentials) and reset.
- If you are wondering about fingerprint enrollment specifically, you still need to set `--enable-features=WebAuthenticationBiometricEnrollment` to enable the feature. Chrome team is working on it to have it default-enabled in Chrome 80 in the near future.



- Set a PIN
You are able create a PIN or change PIN by clicking **Create a PIN**.
Note: PIN length is between 4 – 63 characters.

Create a PIN


Enter your new PIN. A PIN must be at least four characters long and can contain letters, numbers, and other characters.

PIN Confirm PIN

Manage PIN

- If you have resident credentials stored in authenticator, you are able to manage sign-in data by clicking **Manage sign-in data** button.

Security key sign-in data

Website	Username	
 webauthntest.azurewebsites.net	Bob Smith (bob@example.com)	<input type="checkbox"/>

Manage sign-in data

- **Reset security key**
Note: Reset requires to be done with 10 seconds after powering up, and touch twice is needed to prove user presence.

Reset your security key

Can't reset this security key. Try resetting the key immediately after inserting it.

Touch to confirm reset

Touch your security key again to confirm reset. All information stored on the security key, including its PIN, will be erased.

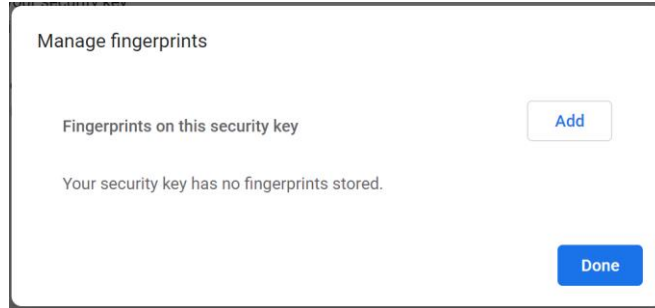
Reset your security key

Your security key has been reset

Reset security key

- Manage fingerprints

You are able to add or remove fingerprint by typing **Manage fingerprints** button. But be noted that you need to set a PIN before managing fingerprints.



Add fingerprint

You can remove selected fingerprint if you have fingerprints enrolled.

